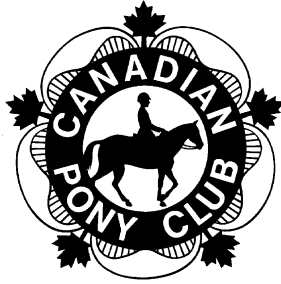


# CANADIAN PONY CLUB



## D2 LEVEL WRITTEN/ORAL Fall 2006

References: MH Manual of Horsemanship – 12<sup>th</sup> Edition  
USD USPC Manual of Horsemanship D Level  
USC USPC Manual of Horsemanship C Level

Total Marks 77 Pass 50 (65%)

### Part A Stable and Pasture

**10 MARKS**

- [2] 1. List two different beddings suitable for horses. MH 135 USD 176
- a) \_\_\_\_\_
- b) \_\_\_\_\_
- [2] 2. List two ways to water a horse in the barn. MH 154
- a) \_\_\_\_\_
- b) \_\_\_\_\_

Circle the correct answer, True or False:

- [1] 3. You can save time and money by keeping your pony at grass. T F  
MH 139 USD 160
- [1] 4. A pony kept in a stall may become bored and develop bad habits like weaving. T F  
MH 129
- [1] 5. A running stream is a satisfactory place for a pony to drink. T F  
MH 156
- [1] 6. You should feed your pony his grain in a bucket in his stall. T F  
MH 176-177
- [1] 7. A pony at pasture needs to be checked once a week. T F  
MH 140
- [1] 8. A stall door should open in to keep the aisle empty. T F  
MH 129

**Part B Feeding**

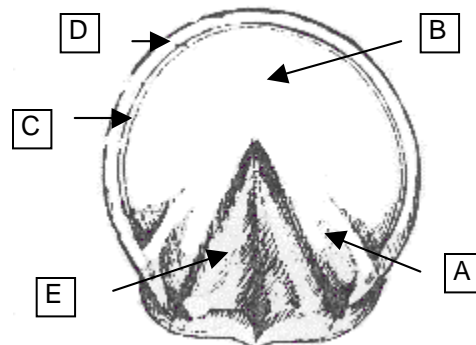
**10 MARKS**

- [4] 1. List four rules of good feeding. MH 158 USD 192-3
- a) \_\_\_\_\_
- b) \_\_\_\_\_
- c) \_\_\_\_\_
- d) \_\_\_\_\_
- [2] 2. Name 2 succulent foods suitable for horses. MH 166-167 USD 185
- a) \_\_\_\_\_ b) \_\_\_\_\_
- [3] 3. Name three things that help you decide how much a horse should be fed. MH 171 USD 192
- a) \_\_\_\_\_
- b) \_\_\_\_\_
- c) \_\_\_\_\_
- [1] 4. Explain the term "good doer". MH 171
- \_\_\_\_\_
- \_\_\_\_\_

**Part C Foot and Shoeing**

**10 MARKS**

- [5] 1. Name the parts of the foot. MH 222 US D 201
- A) \_\_\_\_\_
- B) \_\_\_\_\_
- C) \_\_\_\_\_
- D) \_\_\_\_\_
- E) \_\_\_\_\_



- [2] 2. List 2 signs that the horse needs re-shoeing.  
MH 224 US D 206-207

\_\_\_\_\_

\_\_\_\_\_

- [3] 3. List 3 things to check for in a newly shod foot.  
MH 226

a) \_\_\_\_\_

b) \_\_\_\_\_

c) \_\_\_\_\_

**Part D Grooming**

**15 MARKS**

- [6] 1. Name three grooming tools and give one purpose for each one.  
MH 200-202 USD 169-170

a) \_\_\_\_\_

b) \_\_\_\_\_

c) \_\_\_\_\_

- [4] 2. List four reasons to groom your pony. USD 168

a) \_\_\_\_\_

b) \_\_\_\_\_

c) \_\_\_\_\_

d) \_\_\_\_\_

- [1] 3. When is the best time to do a complete and thorough grooming?  
MH 200 USD 168

\_\_\_\_\_

- [3] 4. List 3 things a rider should do to cool out their horse after hard work. USD 162-167

a) \_\_\_\_\_

b) \_\_\_\_\_

c) \_\_\_\_\_

- [1] 5. Should a hot sweaty pony be given a large bucket of cool water to help cool him down?

Yes \_\_\_\_ No \_\_\_\_ USD 163

**Part E Vet and First Aid**

**15 MARKS**

- [3] 1. List three signs of good health: MH 232 USD 210
- a) \_\_\_\_\_
- b) \_\_\_\_\_
- c) \_\_\_\_\_
- [3] 2. List three signs of a horse with colic. MH 365 USD 211
- a) \_\_\_\_\_
- b) \_\_\_\_\_
- c) \_\_\_\_\_
- [2] 3. What are two signs your pony may be lame? MH 375 USD 212-215
- a) \_\_\_\_\_
- b) \_\_\_\_\_
- [2] 4. List 4 kinds of wounds. MH 359-364 USC 230
- a) \_\_\_\_\_ b) \_\_\_\_\_
- c) \_\_\_\_\_ d) \_\_\_\_\_
- [5] 5. What are the signs of good health in the following: USD 210 & MH 340-341
- a) Eyes: \_\_\_\_\_
- b) Coat: \_\_\_\_\_
- c) Respiration (breathing rate): \_\_\_\_\_
- d) Temperature: \_\_\_\_\_
- e) Pulse (at rest): \_\_\_\_\_

**Part F Saddlery**

**10 MARKS**

- [3] 1. List three snaffle bits. MH 303-305
- a) \_\_\_\_\_
- b) \_\_\_\_\_
- c) \_\_\_\_\_

[2] 2. How do you check each of the following is fitting properly? MH 322  
a) throatlatch - \_\_\_\_\_

b) noseband \_\_\_\_\_

[3] 3. Name three pieces of equipment to clean tack MH 332 USD 256

a) \_\_\_\_\_

b) \_\_\_\_\_

c) \_\_\_\_\_

[1] 4. What is the name given to a saddlepad cut in the shape of the saddle?  
MH 291 USD 272

\_\_\_\_\_

[1] 5. If your saddle slides forward, what would you use to keep it in place?  
MH 291

\_\_\_\_\_

**Part G Miscellaneous**

**7 MARKS**

[5] 1. Give the correct term for MH 392 - 402

a. a white mark between the nostrils \_\_\_\_\_

b. coat has large irregular patches of white and black \_\_\_\_\_

c. a castrated male horse of any age \_\_\_\_\_

d. a new born horse \_\_\_\_\_

e. a narrow white mark down the face \_\_\_\_\_

[2] 2. When measuring a horse, we measure from the highest point of the

\_\_\_\_\_ to the \_\_\_\_\_.  
MH 400-401 USD 234-235